

**ANVIL®**



**5624**

**Adult Lightweight Long & Lean Tee**

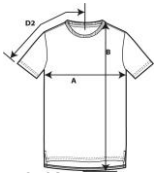


**DETAILS**

**Weight**  
**Content**  
**Yarn Count**  
**Features**

146.0 G/SqM  
100% Combed Ring Spun Cotton  
32/1  
High stitch density for smoother printing surface  
Fitted  
Side seam construction, longer body with vents and 5.1 cm drop tail  
Shoulder-to-shoulder tape and 1.3 cm seamed collar  
Twin-needle sleeve and bottom hem  
TearAway label  
Oeko-Tex® Standard 100 Certified  
S-2XL  
S-XL 72 PIECES  
2XL 36 PIECES  
4  
20

**Sizes**  
**Case Packs**  
**Colours**  
**SKU's**



(B)  
Length from HPS (B)  
Sleeve length (centre back) (D2)

**Chest (A)**  
**Length from HPS (B)**  
**Sleeve length (centre back) (D2)**

	Tol-	Tol+	S	M	L	XL	2XL
	1.905	1.905	43.180	48.260	53.340	58.420	63.500
	2.540	2.540	73.660	76.200	78.740	81.280	83.820
	1.905	1.905	39.370	42.545	45.085	48.260	50.800
	Tol-	Tol+	S	M	L	XL	2XL
	0.750	0.750	17.000	19.000	21.000	23.000	25.000
	1.000	1.000	29.000	30.000	31.000	32.000	33.000
	0.750	0.750	15.500	16.750	17.750	19.000	20.000

**S-2XL**  
**COLOURS**  
Black  
Heather Graphite  
Silver  
White

Code	Comments
036	
780	50% Ring Spun Cotton, 50% Polyester
333	
030	

**CHANGES**  
Total Net Change 0 SKU's