

# B&C ICEWALKER+ - FU 703

## RAW FLEECE



**OUTER  
WEAR  
/UNIT**

- Tone-on-tone full zip opening with zip pull
- 2 front pockets with zips
- Open hem with elasticated cord, 2 stoppers and easy-to-pull rings



BLACK\*

NAVY\*

RED\*



CHARCOAL

\* COLOURS AVAILABLE IN 3XL



100% anti-pilling polyester fleece



300 g/m<sup>2</sup>

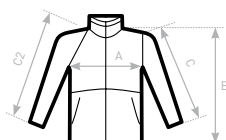


XS - S - M - L - XL - 2XL - 3XL\*



5 pcs/pack & 15 pcs/carton

\* ONLY AVAILABLE IN BLACK, NAVY AND RED



C2= RAGLAN

### SIZES [CM]

B&C ICEWALKER+ FU 703

A HALF CHEST  
B BODY LENGTH  
C SLEEVE LENGTH

	XS	S	M	L	XL	2XL	3XL
A	50	53	56	59	62	65	68
B	68	69,5	71	72,5	74	75,5	77
C	61,5	62,5	63,5	64,5	65,5	66,5	67,5